



While refrigeration is preferred, when you are not able to refrigerate GLATIRAMER ACETATE INJECTION, you may store it for up to 1 month at room temperature between 15° to 30° C (59° to 86° F).

Treating relapsing forms of **Multiple Sclerosis (MS)**, to include clinically isolated syndrome, relapsing-remitting disease, and active secondary progressive disease, in adults.

USE

GLATIRAMER ACETATE INJECTION is a prescription medicine that is used to treat relapsing forms of multiple sclerosis (MS), to include clinically isolated syndrome, relapsing-remitting disease, and active secondary progressive disease, in adults. It is not known if GLATIRAMER ACETATE INJECTION is safe and effective in children under 18 years of age.

IMPORTANT SAFETY INFORMATION

Do not take GLATIRAMER ACETATE INJECTION if you are allergic to glatiramer acetate or mannitol.

Serious side effects may happen right after or within minutes after you inject GLATIRAMER ACETATE INJECTION at any time during your course of treatment.

Please see additional Important Safety Information on the last page.

Click here for the Full Prescribing Information, Patient Information Leaflet and Instructions for Use for GLATIRAMER ACETATE INJECTION 20 mg/mL or GLATIRAMER ACETATE INJECTION 40 mg/mL.



Features of the *Whisper*JECT[®]

The *Whisper*JECT Autoinjector is intended for use with FDA-approved drug products with non-viscous (aqueous) liquid formulations, which are presented in a 1.0 mL BD[®], pre-filled, glass syringe with staked needle, containing a fixed needle of 27G to 29G. The *Whisper*JECT Autoinjector is a reusable injection device for the subcutaneous injection of certain FDA-approved drugs.

The *Whisper*JECT Autoinjector device has features that have been designed by patients, for patients.

● **Textured handle**

designed for a good grip and steady injection

● **Large viewing windows**

on front and back to give you a visual confirmation when your injection is complete

● **Needle shield**

prevents you from seeing needle during self-injection

● **Multiple depth settings**

of 4, 6, 8 and 10 mm accommodate different body types and injection areas

● **Needle cap remover**

safely removes needle cap so you don't have to see the needle prior to injection

Not actual size

Check with your healthcare provider when you fill or refill your medicine to make sure the autoinjector you have is meant to be used with your glatiramer acetate product. If you use the wrong autoinjector, you might not get the correct dose of your medicine.

[Click here](#) for the Instructions for Use provided with your *Whisper*JECT Autoinjector device. The *Whisper*JECT Autoinjector is available by Rx only.



Here when you need us!

(1.844.695.2667)

Not an actual nurse.



VIATRIS ADVOCATE® is your patient support program to help you with your VIATRIS Glatiramer Acetate Injection therapy.

MS-experienced nurses work with you one-on-one to:

- Go through the injection process step by step to help you learn proper injection techniques
- Help you adjust your routine based on lifestyle changes such as changes in weight
- Provide you with tips regarding preparation, administration, storage and disposal of your medicine
- Offer you tools for tracking self-injections
- Connect you to supportive resources and organizations in the MS community
- Assist you in connecting to a support network

IMPORTANT SAFETY INFORMATION

The most common side effects in studies of GLATIRAMER ACETATE INJECTION are skin problems at your injection site, including redness, pain, swelling, itching, or a lump at the site of injection, rash, shortness of breath, flushing (vasodilation), and chest pain. These are not all the possible side effects of GLATIRAMER ACETATE INJECTION.

Please see additional Important Safety Information on the last page.

Click here for the Full Prescribing Information, Patient Information Leaflet and Instructions for Use for GLATIRAMER ACETATE INJECTION 20 mg/mL or GLATIRAMER ACETATE INJECTION 40 mg/mL.

Click here for the Instructions for Use provided with your *WhisperJECT* Autoinjector device.

Welcome Pack



Hot Cold Gel
Pack Front



Neoprene
Sleeve Front



Brochure



Needle Clippers



Artist Bio Card

Included inside the **VIATRIS ADVOCATE Welcome Pack** you'll find:

- Neoprene sleeve that showcases inspiring art created by Shana Stern, an artist living with a relapsing form of multiple sclerosis
- Brochure about VIATRIS' Glatiramer Acetate Injection and VIATRIS ADVOCATE
- Guide for Self-Injection with the *WhisperJECT* Autoinjector
- Needle clipper
- Hot/cold gel pack
- Full Prescribing Information, including Patient Information Leaflet and Instructions for Use

For more information about your patient support program, refer to VIATRIS' Glatiramer Acetate Injection Patient Brochure **in your VIATRIS ADVOCATE Welcome Pack.**

Guide for Self-injection with *WhisperJECT* Autoinjector Rx Only



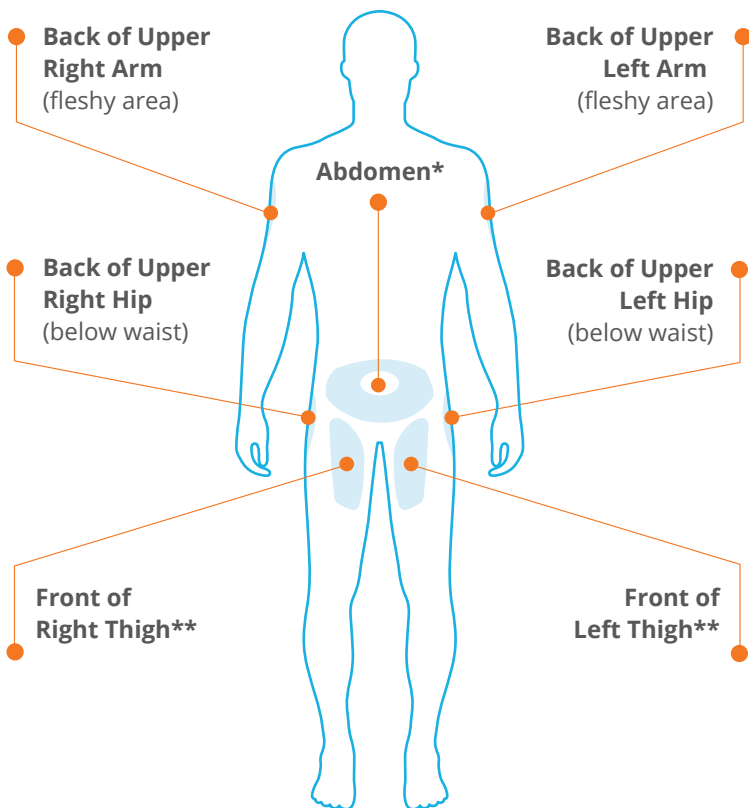
Start Learning More at
GlatiramerAcetate.com

7 Possible Injection Areas

There are 7 possible injection areas. Select a different area each time you inject.

Each injection area contains multiple sites for you to choose from. **Avoid injecting in the same site more than 1 time each week.**

Glatiramer Acetate Injection is for under the skin (subcutaneous) injection only; do not inject into your veins (intravenously).



*Stomach area; Avoid 2 inches around the belly button.

**2 inches above knee and 2 inches below groin

Please see additional Important Safety Information on the last page.

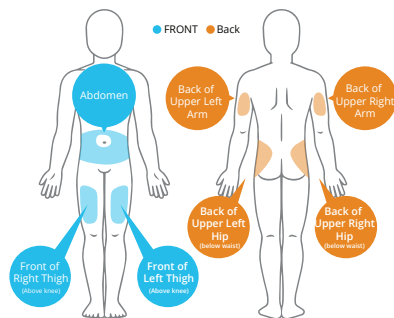
Click here for the Full Prescribing Information, Patient Information Leaflet and Instructions for Use for GLATIRAMER ACETATE INJECTION 20 mg/mL or GLATIRAMER ACETATE INJECTION 40 mg/mL.

Click here for the Instructions for Use provided with your *WhisperJECT* Autoinjector device.

Recording the Day and Injection Site

Visit [GlatiramerAcetate.com](https://www.GlatiramerAcetate.com) to download your free *Rotation Plan* to record your injections with VIATRIS' Glatiramer Acetate Injection.

Inject Glatiramer Acetate into the fatty layer under your skin (subcutaneously).



Remember: There are multiple injection sites within each of the 7 injection areas.

Location	Day	Depth Setting
Back of Upper Right Arm (fleshy area)		
Back of Upper Left Arm (fleshy area)		
Back of Upper Right Hip (below waist)		
Back of Upper Left Hip (below waist)		
Front of Right Thigh (2 inches above knee and 2 inches below groin)		
Front of Left Thigh (2 inches above knee and 2 inches below groin)		
Abdomen (Stomach area; avoid 2 inches around the belly button)		



Keeping a record of your injection sites and a rotations plan helps avoid injections in the same sites more than once per week



You may choose to record the location, day, and depth setting of your injection on your *Rotation Plan* PDF available for download from [GlatiramerAcetate.com](https://www.GlatiramerAcetate.com).



See additional information in the *Injection Help* section of the [GlatiramerAcetate.com](https://www.GlatiramerAcetate.com) website

Please see additional Important Safety Information on the last page.

Click here for the Full Prescribing Information, Patient Information Leaflet and Instructions for Use for GLATIRAMER ACETATE INJECTION 20 mg/mL or GLATIRAMER ACETATE INJECTION 40 mg/mL.

Click here for the Instructions for Use provided with your *WhisperJECT* Autoinjector device.

IMPORTANT SAFETY INFORMATION

Do not take GLATIRAMER ACETATE INJECTION if you are allergic to glatiramer acetate or mannitol.

Serious side effects may happen right after or within minutes after you inject GLATIRAMER ACETATE INJECTION at any time during your course of treatment. Call your healthcare provider right away if you have any of these immediate post-injection reaction symptoms including redness to your cheeks or other parts of the body (flushing); chest pain; fast heartbeat; anxiety; breathing problems or tightness in your throat; or swelling, rash, hives, or itching. If you have symptoms of an immediate post-injection reaction, do not give yourself more injections until a healthcare provider tells you to.

Chest pain may occur either as part of the immediate post-injection reaction or by itself. This type of chest pain usually lasts a few minutes and can begin around 1 month after you start using GLATIRAMER ACETATE INJECTION. Call your healthcare provider right away if you experience chest pain.

Damage to the fatty tissue just under your skin's surface (lipoatrophy) and, rarely, death of your skin tissue (necrosis) can happen when you use glatiramer acetate injection. Damage to the fatty tissue under your skin can cause a "dent" at the injection site that may not go away. You can reduce your chance of developing these problems by:

- following your healthcare provider's instructions for how to use glatiramer acetate injection
- choosing a different injection area each time you use glatiramer acetate injection

Liver problems, including liver failure, can occur with GLATIRAMER ACETATE INJECTION. Call your healthcare provider right away if you have symptoms, such as nausea, loss of appetite, tiredness, dark colored urine and pale stools, yellowing of your skin or the white part of your eye, bleeding more easily than normal, confusion, or sleepiness.

Some glatiramer acetate products can be used with an optional compatible autoinjector. Compatible autoinjectors are supplied separately if available, but the availability of compatible autoinjectors may change with time. Check with your healthcare provider when you fill or refill your medicine to make sure the autoinjector you have is meant to be used with your glatiramer acetate product. If you use the wrong autoinjector, you might not get the correct dose of your medicine.

The most common side effects in studies of GLATIRAMER ACETATE INJECTION are skin problems at your injection site, including redness, pain, swelling, itching, or a lump at the site of injection, rash, shortness of breath, flushing (vasodilation), and chest pain. These are not all the possible side effects of GLATIRAMER ACETATE INJECTION. For a complete list, ask your healthcare provider or pharmacist. Tell your healthcare provider about any side effects that you have while taking GLATIRAMER ACETATE INJECTION.

You are encouraged to report negative side effects of prescription drugs to the FDA. Visit www.fda.gov/medwatch or call 1-800-FDA-1088.

Click here for the Full Prescribing Information, Patient Information Leaflet and Instructions for Use for GLATIRAMER ACETATE INJECTION 20 mg/mL or GLATIRAMER ACETATE INJECTION 40 mg/mL.

WhisperJECT and the Glatiramer Acetate Injection Logo are registered trademarks of Mylan Pharmaceuticals Inc., a Viatrix Company.

VIATRIS ADVOCATE and the Viatrix Advocate Logo are registered trademarks of Mylan Inc., a Viatrix Company. VIATRIS and the Viatrix Logo are trademarks of Mylan Inc., a Viatrix Company.

BD® is a registered trademark of Becton, Dickinson and Company.

© 2024 Viatrix Inc. All Rights Reserved. GA-2021-0098 V4